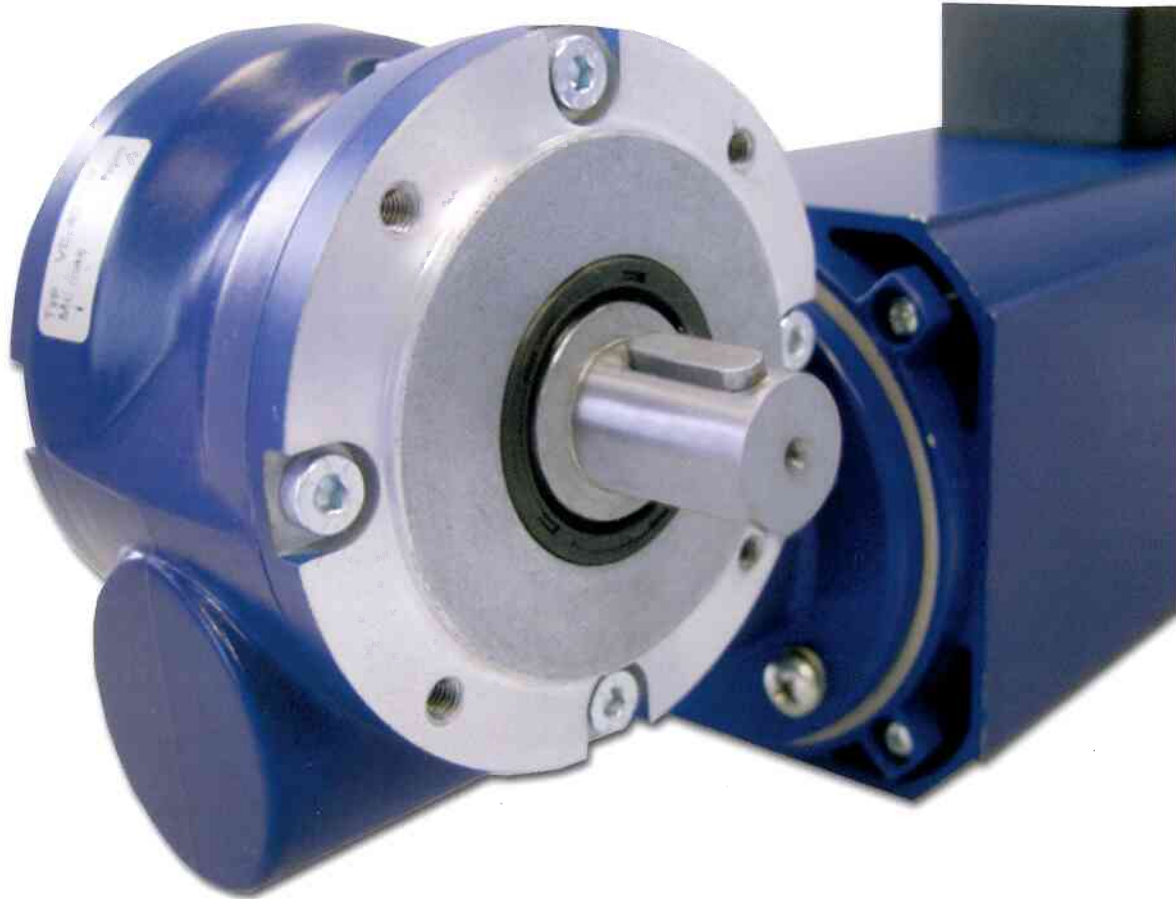


Compact-built. Flexible. Variable

VARIO VE40

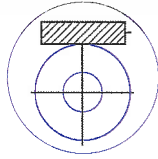


Adaptable in any
given situation



GROSCHOPP 

VARIO VE40



- **Modular design**
 - cover (through hole for screws)
 - foot (optional)
 - flange (optional)
- **Option of drive shaft protruding on both sides or one side only**
- **Hollow shaft**
- **Option of plug-in drive shaft protruding**
 - one side only (RHS)
 - one side only (LHS)
- **Good efficiency factor**
- **Increased load capacity**
- **Alternative mounting possibilities**
- **Low noise level**
- **O-Ring sealing**
- **Optional features available:**
 - drive shaft support (solid shaft design)
 - drive shaft rotating in ball bearings (hollow shaft design)
- **New Power Generation Design**
- **Special features considered for series manufacturing**



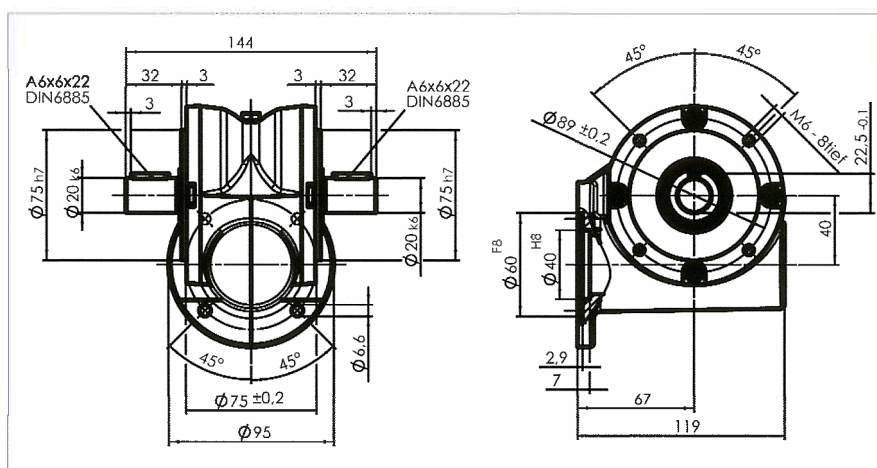
VARIO VE40: The variable modular system

Model with cover and solid drive shaft (protruding on both sides or one side only)

Load-rating of drive shaft

	F_R [N]	F_{ax} [N]
VE40-D-B	700	300

Torque (max.):
45 Nm depending on gear ratio

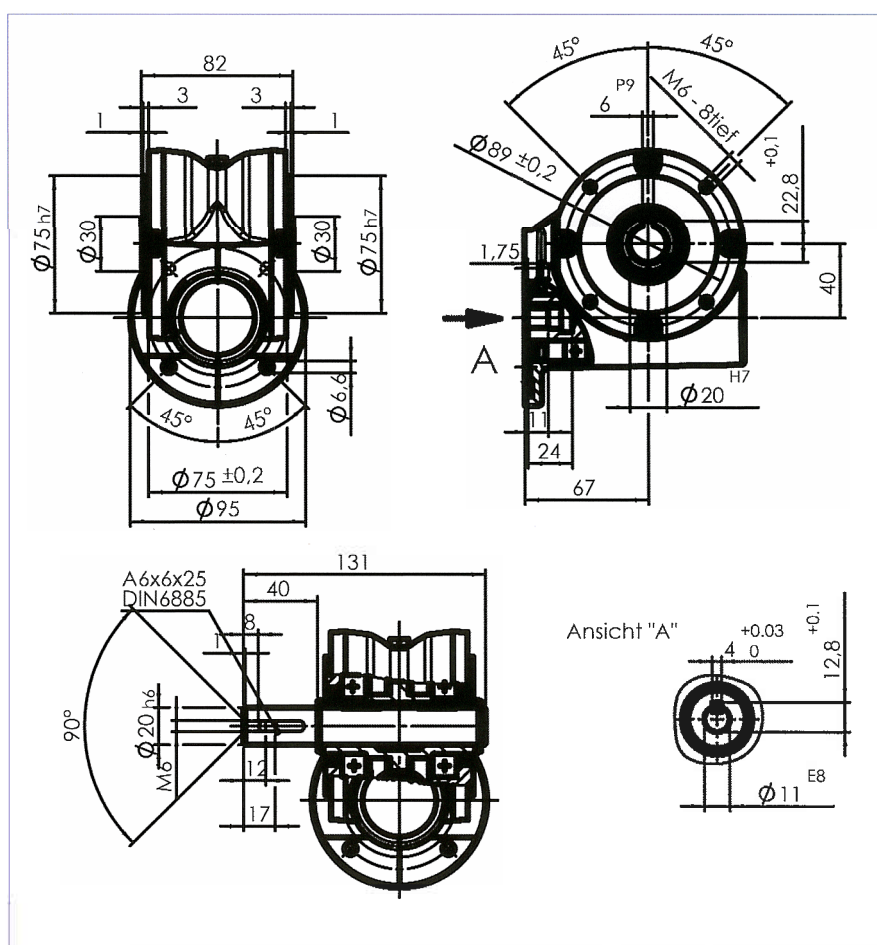


**Model with cover and hollow drive shaft
(plug-in drive shaft protruding either at RHS
or LHS; both sides on special request)**

Load-rating of drive shaft

	F_R [N]	F_{ax} [N]
VE40-D-H	700	300

Torque (max.):
45 Nm depending on gear ratio

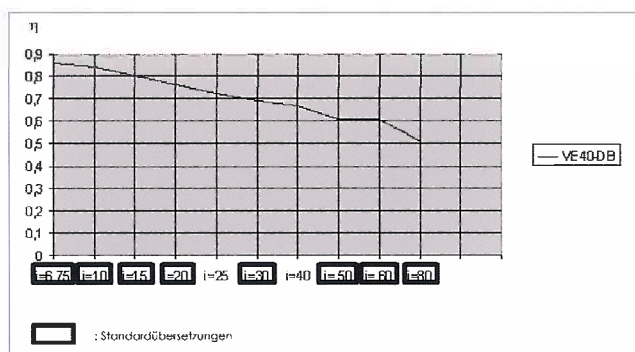
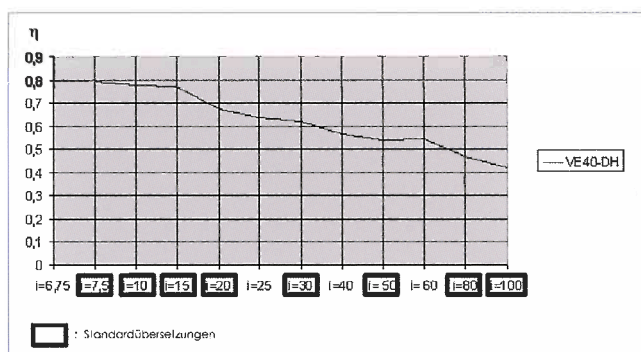


plug-in drive shaft left

All model drawings shown here correspond to mounting position 1.

VARIO VE40: Efficiency factors

$n_{\text{mot}} = 1400 \text{ min}^{-1} / 2800 \text{ min}^{-1}$



Synthetically based gear oil is used as standard lubricant.

Admissible power loss: 95 W (max.)

Thermal rating of gear must be individually ascertained.



Further development of our
Worm gear generation VARIO:

VARIO VE40

The first worm gear of the generation-type VARIO: VE31 has proved itself extremely successful on the market, therefore, the further development of a more powerful gear was a logical step.

While the VE31 can be operated at a constant torque of between 12 and 16 Nm, depending on its ratio, the VE40 surpasses this by 3-fold to up to 45 Nm. Moreover, the admissible power loss of the stronger VE40 worm gear is at 95 Watt almost 4 times that of the VE31.

The VE40 is designed in a similar modular fashion as the VE31; it can be combined with flanges or feet at low cost. It can be variably operated and attached to the motor in any position.

Rotating in ball bearings, the hollow drive shaft version allows the gear to be self-sustaining and enables a trouble-free attachment of, e.g. standard motors without the need of any special adjustment elements.

The hollow drive shaft version can, by simply putting in a solid drive shaft, be easily converted into a compact drive shaft version, thus offering a maximum flexibility.

The compact solid drive shaft version provides for an even higher efficiency factor compared to the hollow drive shaft version.

Thus, **GROSCHOPP** offers its customers another 'building-block', in order for them to avail of the enhanced motor capacity developed in **GROSCHOPP** over the past few years, and in that way achieve yet higher torques by using the VARIO gear family.

- Compact-built volume
- Proven longevity
- Optimal cost/performance ratio



GROSCHOPP 