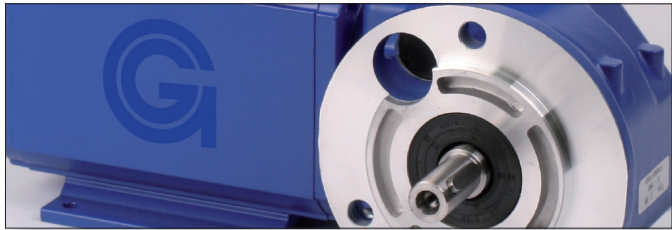


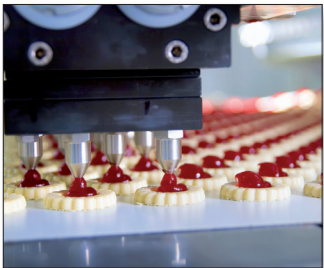
We are the specialists  
for your drive



From high voltage switches to bag closing machines, from magnetic resonance imaging (MRI) to the professional grills, the requirements of our customers are as manifold as their applications.



For the design of some products, standard components are not sufficient. In this case it is a big advantage to have a manufacturer at your side who designs, develops, produces and installs to customer-specific requirements.



There are no limits for creativity - this is how we realize unusual designs for you and use special materials. Drive systems in stainless steel or in SILA-COAT® coating are just as natural in our portfolio as integrated controllers.



Our motors are:  
**competitive - compact - customised**

**GROSCHOPP** 

GROSCHOPP AG  
Drives & More

Contact us.

Address:  
Greefsallee 49  
D-41747 Viersen  
Telefon: +49 (0) 21 62/374-0  
Telefax: +49 (0) 21 62/374-108  
E-Mail: [info@groschopp.de](mailto:info@groschopp.de)  
Homepage: [www.groschopp.de](http://www.groschopp.de)

Drive  
for the  
Future



**GROSCHOPP**   
Drives & More

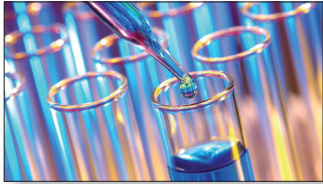
# Our Applications

## Energy industry



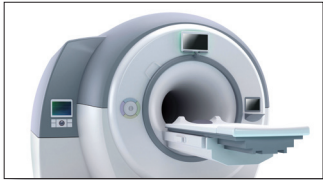
- Low-, Medium- and High-voltage switchgear units
- Vacuum-switchgear units
- Earthing switch
- Stepping switchgear units for transformers

## Chemical/Pharmaceutical industry



- Plastic checking equipment
- Granulate equipment
- Extrusion machines
- Rubber and Plastic machinery
- Compressors
- Vacuum Pumps
- Bottling plants

## Health care industry



- X-Ray equipment
- Magnetic resonance imaging
- Laboratory mixer
- Centrifugal equipment
- Laboratory compactors
- Testing equipment
- Plaster saws

## Food industry



- Grill equipment
- Honey extractors
- Egg-sorting equipment
- Butchery equipment
- Cheese stirring machines
- Baking equipment
- Cutting equipment
- Weighfillers
- Dynamic scales

## Packaging industry



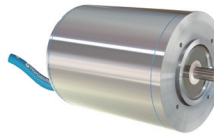
- Bag closing equipment
- Foil packaging
- Beverage container packaging
- Labelling equipment
- Rope-factory equipment
- Automated guided vehicle for logistic issues

# From Standard Solutions to High-End Applications



### Servo motors

EGK 48 to EGK 150  
Output: from 0,17 to 7,5 kW  
Torque: from 0,6 to 29 Nm



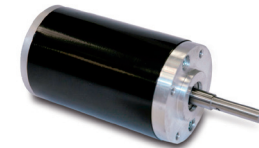
### Stainless steel motors

Induction, Servo or commutator motor also with planetary or worm gear  
Output: from 120 to 2300 W



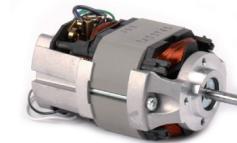
### Induction motors

IG 65 to IG 100  
Output: from 9 to 740 W  
Voltages: up to 600 V AC  
**Energy efficiency class according to IEC60034: IE2 or higher**  
Available in various coatings (FDA conform)



### Permanent magnet motors

PM 40 to PM 114  
Output: 4 to 400 W  
Voltages: 24 to 190 V DC



### Commutator motors

KE 44 to KE 120  
Output: 2 to 2700 W  
Voltages: 24 to 190 V DC  
Series and Shunt-wound

**All motors are available combined with various gearboxes and controllers.**

# Drive solutions, tailor-made for your requirements

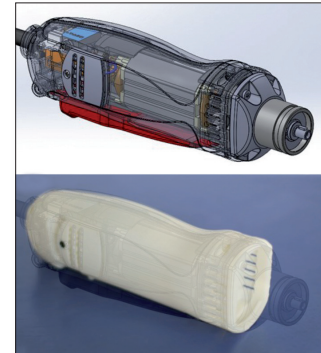
## Application

Our team supports your design department in layout and selection of the right drive system. This results in customer-oriented solutions that are tailored to the requirements of your respective applications.



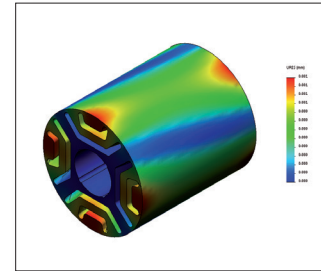
## Research and development

Experienced engineers are checking latest developments against proven technologies. Only after a successful validation of the checked characteristics, they will find their way into the current product portfolio. For this interdisciplinary teams are using state of the art design and analytics tools.



## Rapid Prototyping & FEM

To shorten the development cycles and to accelerate the validation of the application to the requirements of the customers, Groschopp relies on the technologies of rapid prototyping and finite element calculation.



## Quality-Management-System

Groschopp stands for quality. In the tradition of this responsibility, the documented processes are reviewed in periodically audits. This creates guidelines, that ensures continuous quality leadership.

